

CB-2012 Series

SPECIFICATION SHEET

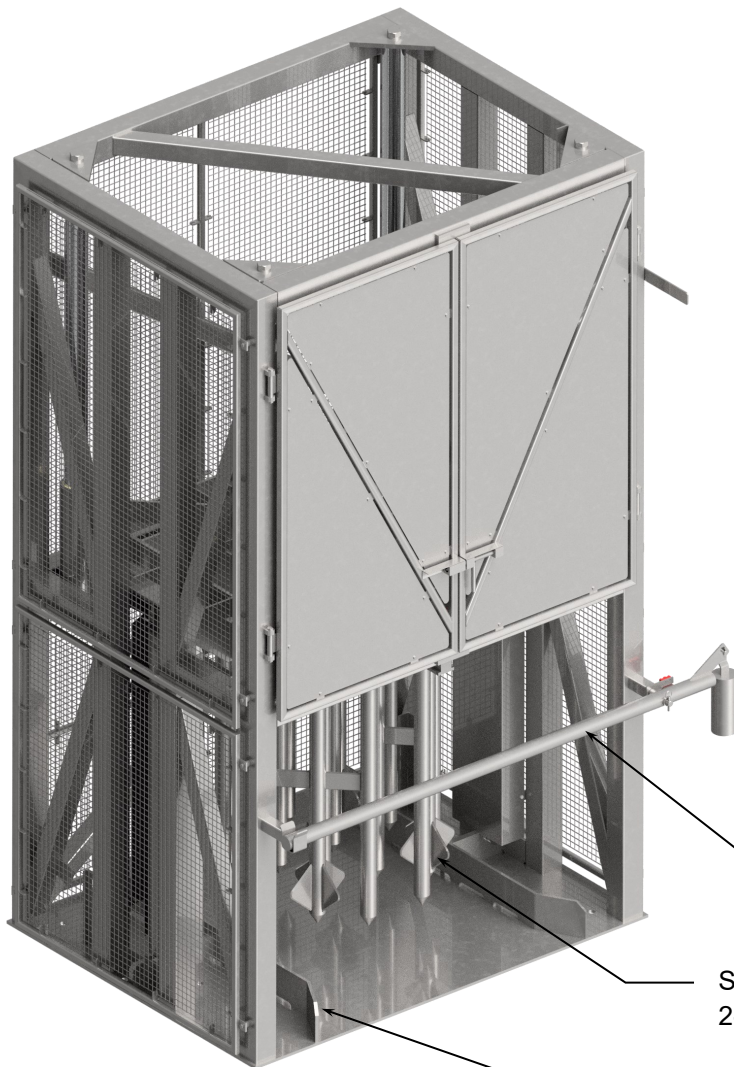


MTC CB-2012 Cluster Breaker

The MTC Model CB-2012 Cluster Breakers are designed to provide our customers with an economical, safe, and effective tool for pre-breaking refrozen combos of individually quick frozen (IQF) products.

The CB-2012 is constructed of type 304 stainless steel for ease of sanitation and durability. All electrical components are rated for washdown environments and the Hydraulic Power Unit has a stainless steel cover.

This Cluster Breaker is supplied with a PanelView Plus 7" Touchscreen interface. The PanelView allows the user to create 9 different programs for breaking up product utilizing two different



modes (Position/Taught). It also allows for manually jogging the spikes up and down.

The CB-2012 features 2 lockout pins, one located on each front column. These pins are used to secure the platen and spikes in the up position, so maintenance can be performed.

**Contact the MTC Sales
Team at
(254) 298-2900,
or visit our website
www.gomtc.com**

CB-2012 Series

SPECIFICATION SHEET



Standard Features

- All stainless steel construction
- 1/2" thick solid bottom
- 4" main cylinders
- 2 lockout pins, one located on each front column
- Railroad style safety gate
- 15 HP, 17GPM, 50-Gal reservoir hydraulic power unit
- Complete electrical controls 480 V 24 VCD control
- Panelview Plus 7" touchscreen interface & PLC allows the user to create 9 different programs for breaking up product
- Safety switches prevent front doors from opening during operation
- Photo eye & reflector ensures pallet is in correct position
- 16 solid round spikes (2-1/2" diameter)
- Plastic slide bearings
- Pallet guides in bottom
- One container 48 X 48 X 51"H, including pallet

Safety Switch Prevents Doors from Opening during Operation



16 Solid Round Spikes (2-1/2" Dia.)



Auto/Manual Control w/PanelView Plus 7" Screen

Optional Features

- Special size containers
- Hydraulic entry gate
- Special voltage
- Custom spike arrangement
- Stainless steel cylinders
- Stainless steel reservoir

Contact the MTC Sales Team at (254) 298-2900, or our website www.gomtc.com



15 HP, 17 GPM, 50 Gal Reservoir Hydraulic Power Unit

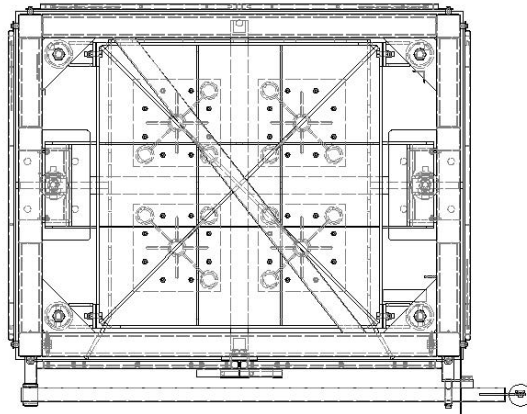
CB-2012 Series

SPECIFICATION SHEET



Dimensions

Custom Sizes Available



Contact the MTC
Sales Team
at (254) 298-2900, or
our website
www.gomtc.com

